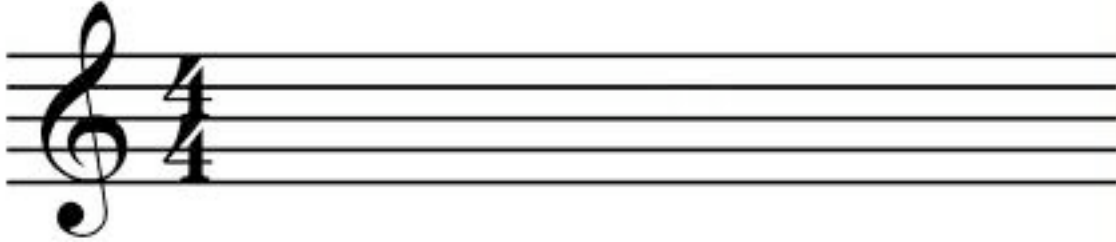


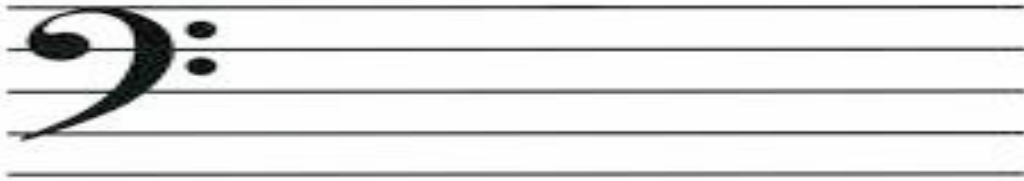
Music Theory Exercises (Treble Clef)

Using the information given in the Music Theory notes, complete the following exercises to practice learning theory.

1. Label all of the notes (lines and spaces) on the Treble Clef Staff



2. Label all the notes (lines and spaces) on the Bass Clef Staff



3. Complete the following worksheet

The Staff - Treble Clef

At the beginning of each staff there is a clef. The treble clef (also known as G clef) looks like this:



The treble clef gives establishes a landmark on the note G on the 2nd line of the treble staff.

To draw the treble clef, draw:
the line and tail



1.

the top loop



2.

the left loop



3.

the right loop



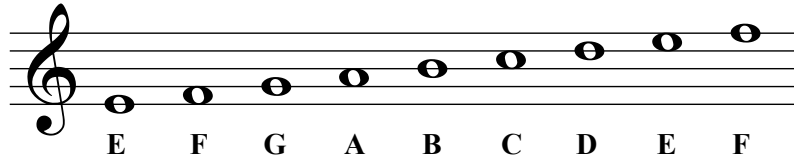
4.

the curl

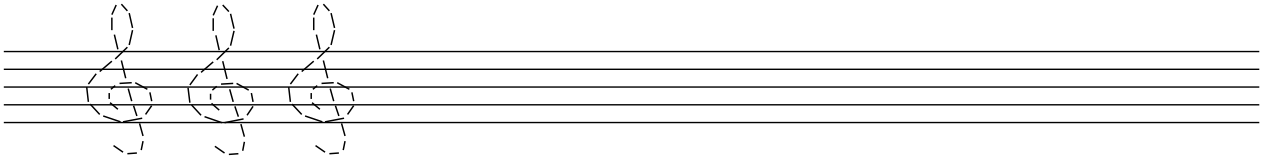


5.

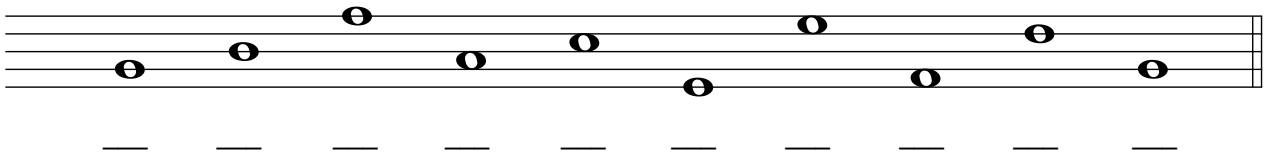
Notes are named after the first seven letters of the alphabet (A through G).



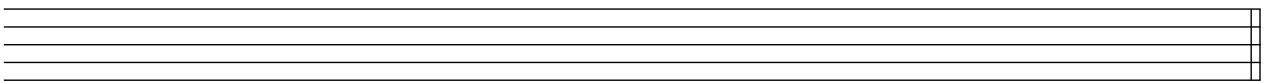
1. Try drawing the treble clef sign by tracing over the dotted lines. Then draw five more of your own.



2. Draw a treble clef at the beginning of the staff. Then write the letter names of each note.



3. Draw a treble clef at the beginning of the staff. Then draw the notes indicated. If a note can be written on more than one place on the staff, choose one.



G E B C D B A C D F

4. Complete the following worksheet
The Staff - Bass Clef

The bass clef (also known as F clef) looks like this:



The bass clef gives a landmark on the note F on the 4th line of the bass staff.

To draw the bass clef, draw:
 a black dot



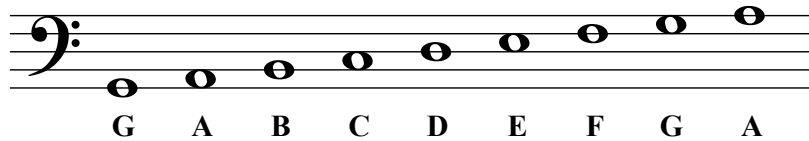
a curve



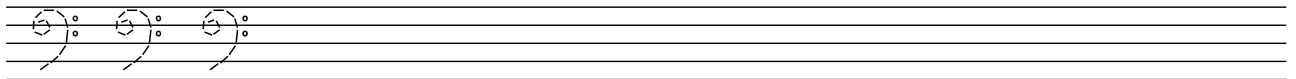
two dots



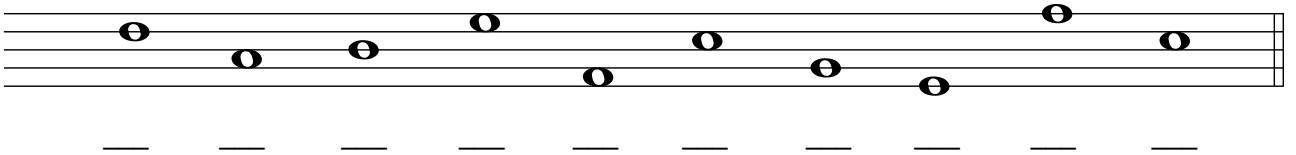
Notes are named after the first seven letters of the alphabet (A through G).



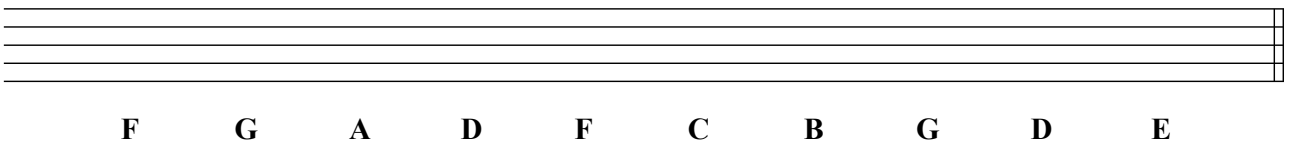
1. Try drawing the bass clef sign by tracing over the dotted lines. Then draw five more of your own.



2. Draw a bass clef at the beginning of the staff. Then write the letter names of each note.



3. Draw a treble clef at the beginning of the staff. Then draw the notes indicated. If a note can be written on more than one place on the staff, choose one.



5. Name all of the notes written on the staff

Note Identification Speed Test

Test #1 (Treble Clef)

Voice 

Vo. ⁵ 

Vo. ⁹ 

Vo. ¹³ 

Note Identification Speed Test

Test #2 (Treble Clef)

Voice 

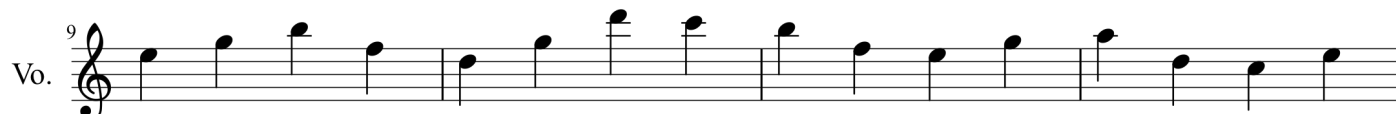
Vo. ⁵ 

Vo. ⁹ 

Vo. ¹³ 

Note Identification Speed Test

Test #3 (Treble Clef)



Note Identification Speed Test

Test #4 (Treble Clef)



Note Identification Speed Test

Test #5 (Treble Clef)

Voice 

Vo. ⁵ 

Vo. ⁹ 

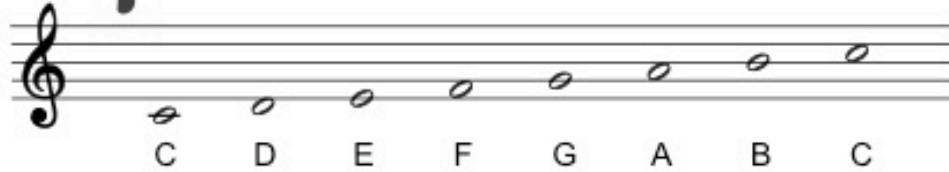
Vo. ¹³ 

6. List all note names, as well as the enharmonic for any that have an alternate name

Note	Name
1	
2	
3	
4	
5	
6	
7	
8	
9	
10	
11	
12	

7. Fill in the words being spelled using notes

Treble Clef



A single treble clef staff with eight quarter notes. The notes are positioned on the following lines and spaces from bottom to top: C (first space), D (second line), E (third space), F (fourth line), G (fifth space), A (first space), B (second line), and C (third space). Below each note is its corresponding letter label: C, D, E, F, G, A, B, C.



A treble clef staff with four measures. The notes are: C (first space), D (second line), E (third space), F (fourth line), G (fifth space), A (first space), B (second line), and C (third space). Below the staff are four horizontal lines for writing the word "C".



A treble clef staff with four measures. The notes are: D (second line), E (third space), F (fourth line), G (fifth space), A (first space), B (second line), and C (third space). Below the staff are four horizontal lines for writing the word "D".



A treble clef staff with four measures. The notes are: E (third space), F (fourth line), G (fifth space), A (first space), B (second line), and C (third space). Below the staff are four horizontal lines for writing the word "E".




A treble clef staff with four measures. The notes are: F (fourth line), G (fifth space), A (first space), B (second line), and C (third space). Below the staff are four horizontal lines for writing the word "F".


8. Fill in the blanks using the note names


About This Activity


Here's a chance to read a funny poem and learn your note names at the same time. Some of the words in this poem are spelled out with music notes instead of alphabet letters. Figure out what the note names are and write them in the blanks below the notes to solve the puzzle.


I Thought That I Was Crazy

I woke up this morning, and jumped up out of 


I thought that I was crazy, going out of my 
h _ _ _


I'd been dreaming of my homework, with a smile on my 

And doing as I'm asked , and always in my 
pl _ _ _


I loved to please my parents, and  alike.
t _ _ _ h _ r s

I loved to pick my toys up,  I ride my bike.
_ _ _ or _

The knocking at the door is what startled me from this 
_ r i _ h t

And saved me from this dream,  most certain plight.
_ n _

Had my dream continued, I feared there'd come a 
_ _ y

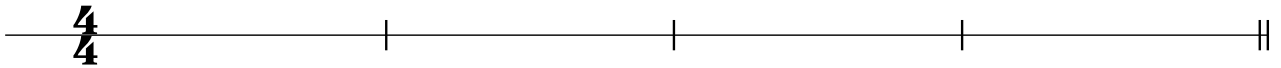
The men in white would come for me, and carry me 
_ w _ y

9. Answer the following questions on timing:

- a. How many half notes are there in a whole note? _____
- b. How many quarter notes are there in a whole note? _____
- c. How many eighth notes are there in a quarter note? _____
- d. How many sixteenth notes are there in a whole note? _____
- e. How many eighth notes are there in a whole note? _____
- f. How many sixteenth notes are there in a quarter note? _____

10. Complete the following exercise on rhythms


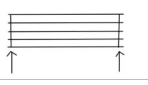


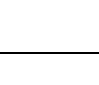




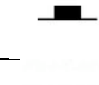
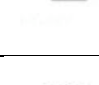
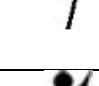
Fill this line with quarter notes, four per bar:



At each * complete the measure with a note of appropriate value:



11. Match the symbol with its description by writing the correct letter in the middle column

		Letter Answer Here		
1			A	Quarter Note – This note’s duration is one fourth of the measure. The note is filled in and has a stem .
2			B	Half Rest – This rest’s duration is one half of the measure. It looks like a hat .
3			C	Sixteenth Rest – This rest’s duration is one sixteenth of the measure. It has 2 tails, like the sixteenth note.
4			D	Time Signature – The top number represents how many beats are in a measure; the bottom number represents what the duration of each beat is.
5			E	Sixteenth Note – This note’s duration is one sixteenth of the measure. The note is filled in, has a stem, and has a double tail on it.
6			F	Whole Rest – This rest’s duration is the entire measure. It looks a bit like a hole in the ground .
7			G	Half Note – This note’s duration is one half of the measure. The note is not filled in and has a stem.
8			H	Eighth Rest – This rest’s duration is one eighth of the measure. It has one tail, like the eighth note.
9			I	Measure – The vertical lines show where the measure begins and ends
10			J	Eighth Note – This note’s duration is one eighth of the measure. The note is filled in, has a stem, and has a tail.
11			K	Quarter Rest – This rest’s duration is one fourth of the measure.
12			L	Whole Note – This note’s duration is the entire measure. The note is not filled in and does not have a stem.

14 What are the names of these Major Keys?



a. _____



d. _____



b. _____



e. _____



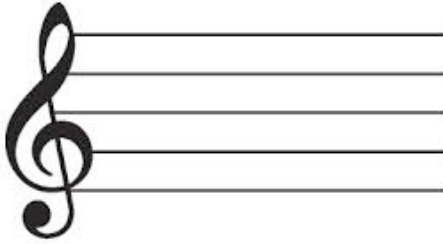
c. _____



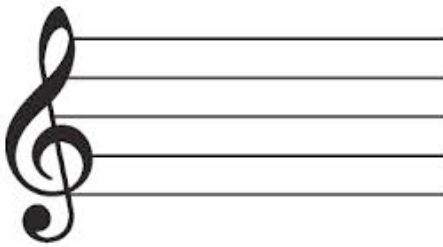
f. _____

15. Draw these key signatures

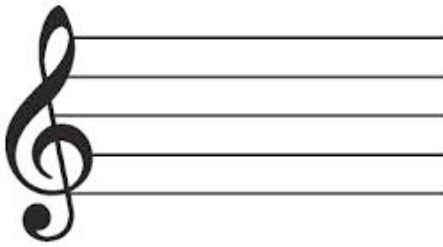
a. F Major



b. E Major



c. G Major



d. Eb Major

